



## Influenza-like illness surveillance, Israel

### Weekly report, updated for week 33/2009 (ending 15/8/09)

#### Summary

During the past week the increase in influenza-like illness was more moderate. Rates of visits to community clinics due to pneumonia declined. Visits to adult and pediatric ER due to pneumonia continued to decline. Forty-two (36.2%) of 116 nasopharyngeal specimens collected during the past week by the sentinel clinic network were found to be positive to pandemic influenza H1N1.

#### **Morbidity**

- ❑ **Morbidity due to influenza-like illness/ upper respiratory infection (Figures 1-3):** In the community: During the past week the increasing trend in rates of visits to community clinics due to influenza-like illness was more moderate. Data from Maccabi Health Services indicate that a decrease was observed among children and adolescents aged 2-18, mainly in the central district. In the other districts rates continued to increase, however, more slowly than before. Data from Clalit Health Services show a somewhat different picture: a continued increase in the central district, a decrease in the Haifa district, and no change in the Tel Aviv district. In the Jerusalem, southern and northern districts, rates of visits continue to rise. In the ERs: During the past week, a decrease was observed in visits to adult ERs due to acute upper respiratory infection, after two consecutive weeks of a rising trend. In pediatric ERs, for the second week in succession, no increase in visits was observed during the past week. For the sixth week in succession, visits due to acute upper respiratory infection are higher than expected in the summer season, in both adult and pediatric ERs (data not shown).
- ❑ **Morbidity due to pneumonia (Figures 4-7):** In the community: During the past week, a decrease was observed in rates of visits to community clinics of Maccabi Health Services due to pneumonia. This decrease was evident particularly among infants under the age of two years and children and adolescents aged 2-18. In the ERs: Visits to both adult and pediatric ERs due to pneumonia continue to decline. These rates are now close to the annual averages.
- ❑ **Hospitalizations (Figures 8-9):** During the past week there was a decrease in average bed occupancy, in both adult departments (99.5%) and pediatric departments (75%). No change was observed in use of artificial ventilation systems.

#### **Mortality**

- ❑ **Figures 10-11:** During the past week, a decrease was observed in the number of deaths (all causes) in general hospitals. The number of deaths is now in accordance with the annual average for the summer season.



**Laboratory surveillance (Figure 12):** During the week ending 15/8/09, 116 nasopharyngeal swabs were collected by the sentinel clinics network. 42 specimens (36.2%) were found to be positive for pandemic influenza H1N1. Since the beginning of the pandemic influenza in Israel (week 18, ending 2/5/09), a total of 950 specimens have been collected by the sentinel clinics. 358 (37.7%) were found to be positive for pandemic influenza H1N1.

### **Influenza activity in the world (based on CDC and EISS weekly reports)**

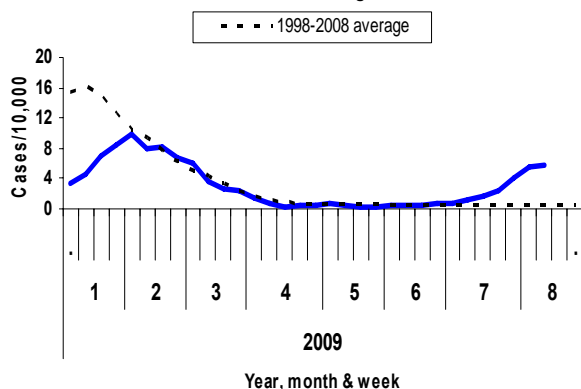
**U.S:** Influenza activity continues to decrease in the United States, however, rates of influenza-like illness are still high for this time of the year (as of week 32, ending 8/8/09). Rates of clinic visits for influenza-like illness are still below the national baseline. During week 32, seasonal influenza A/H1, A/H3 and B viruses co-circulated with pandemic influenza H1N1, however over 98% of all positive specimens reported to the CDC were positive for pandemic influenza H1N1.

**Europe:** During week 32, low or moderate levels of influenza activity were reported in Europe. Austria, England, Wales and Holland reported widespread influenza morbidity, while the other countries reported localized activity or lack of activity. All of the 10 countries reporting on impact of the influenza pandemic stated that the demand for health services did not exceed the usual level.

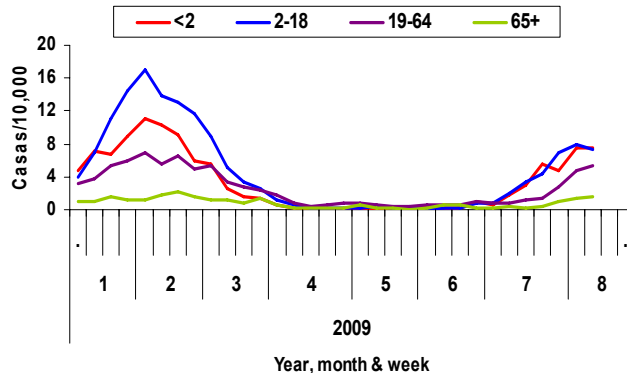
**Pandemic Influenza H1N1:** As of 14/8/09, 226, 065 cases of pandemic influenza H1N1 and 2,004 deaths have been reported worldwide. In Israel (as of 11/8/09), over 2000 cases have been confirmed. It is assumed that the total number of cases is far larger, and is estimated at several thousand. There have been five (5) deaths from complications of pandemic influenza H1N1.

**Patient visits to community clinics**

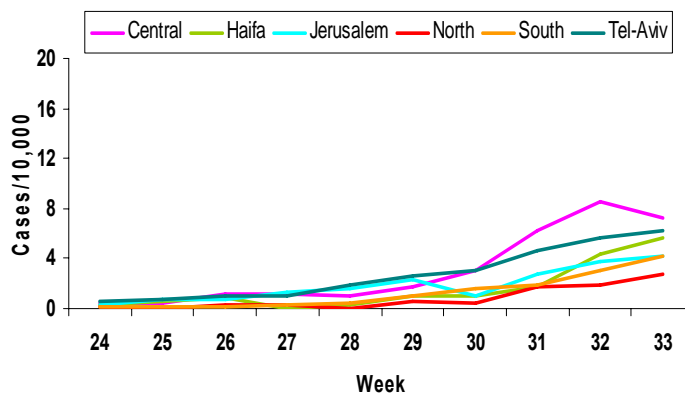
**Fig. 1: Weekly visits to community clinics due to influenza-like illness, by year, 2008-2009, compared to annual average**



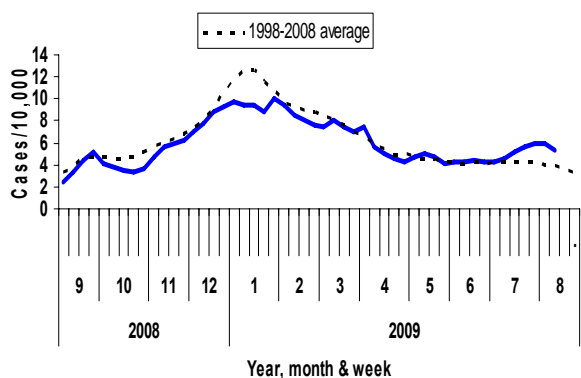
**Fig. 2: Weekly visits to community clinics due to influenza-like illness, by age, 2009**



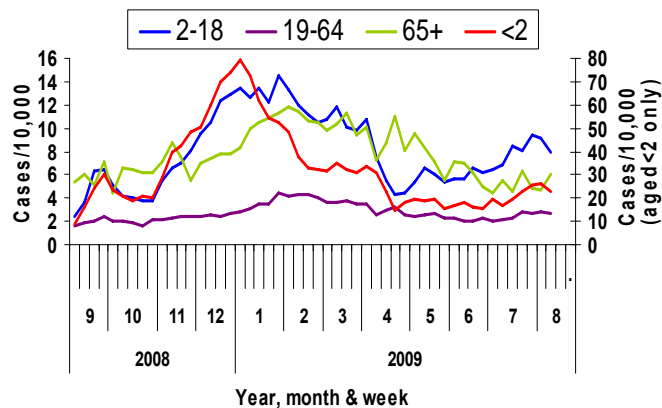
**Fig. 3: Weekly visits to community clinics due to influenza-like illness, by district, 2009**



**Fig. 4: Weekly visits to community clinics due to pneumonia, by year, 2008-2009, compared to annual average**



**Fig. 5: Weekly visits to community clinics due to pneumonia, by age, 2008-2009**



### Admissions to ERs (Clalit Health Services)

Fig. 6: Weekly visits to Emergency Rooms (adults) due to pneumonia, Clalit hospitals, 2008-2009, compared to annual average

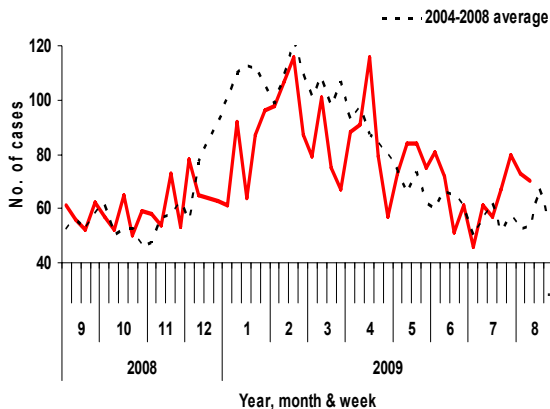
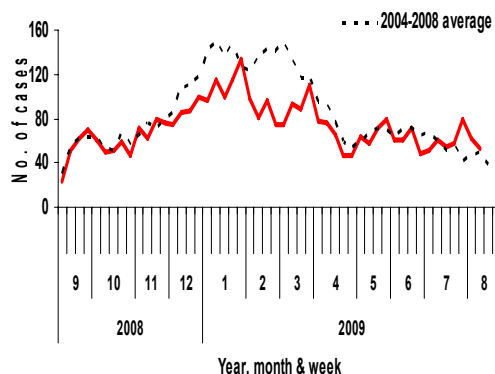


Fig. 7: Weekly visits to pediatric Emergency Rooms due to pneumonia, Clalit hospitals, 2008-2009, compared to annual average



### Hospitalizations

Fig. 8: Weekly average bed occupancy, internal and pediatric departments, all hospitals, 2008-2009

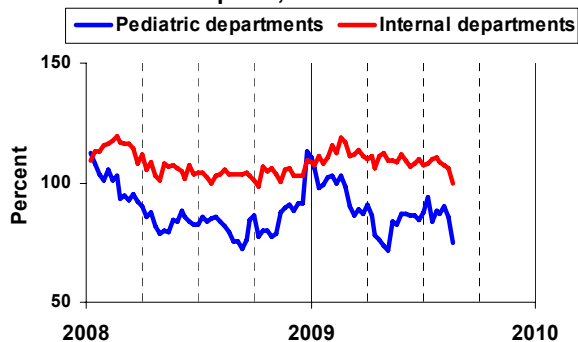
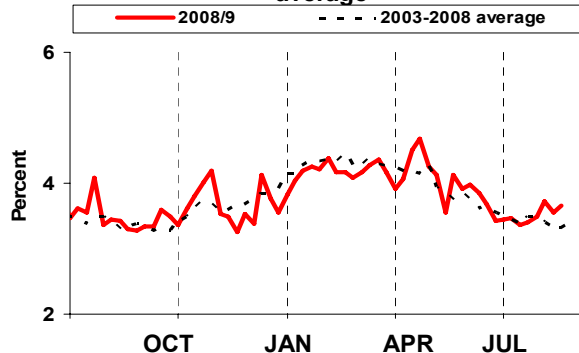


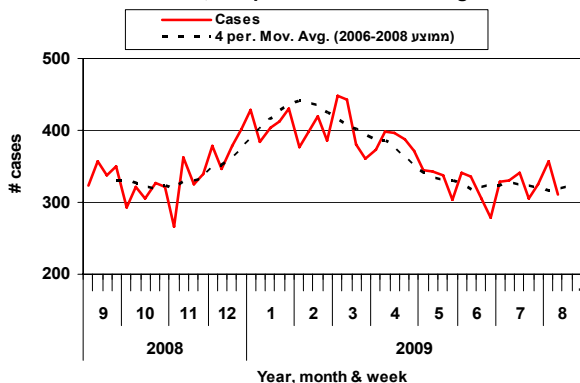
Fig. 9: Use of artificial ventilation in relation to overall bed occupancy, all hospitals, 2008-2009, compared to annual average



### Mortality

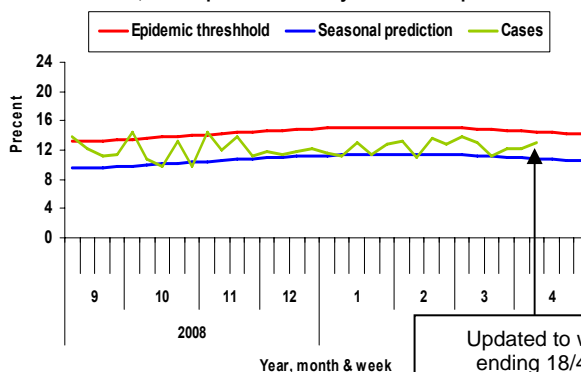
#### Hospital Mortality

Fig. 10: Number of hospitals deaths, all causes, 2008-2009, compared to annual average



#### Pneumonia- Related Mortality (Epidemiology Department)

Fig. 11: Percentage of pneumonia-related deaths, 2008-2009, as compared to a multi year seasonal prediction



Updated to week ending 18/4/09

**Laboratory Surveillance ( Central Virology Laboratory, Tel Hashomer)**

**Fig. 12: Positive influenza samples out of total samples collected by sentinel network, 2009**

