



חטיבת הבריאות
המרכז הלאומי לבקרת מחלות
ICDC – Israel Center for Disease Control

משרד
הבריאות
לחיים בריאים יותר

Surveillance of influenza-like illness in Israel

Weekly update report for Week 13, ending 30-Mar-13

Summary: The decrease in influenza activity is continuing.

Clinically: In the community: The decreases in visit rates due to influenza-like illness and pneumonia are continuing. In hospitals: No significant change in the percentage of visits to internal medicine and pediatric emergency rooms due to pneumonia. Decreases in hospital bed occupancy rates in internal medicine and pediatric departments.

Laboratory: Two (16.6%) of the 12 specimens collected from the sentinel clinics during the past week were found to be positive for influenza B. Two additional specimens were found to be positive for RSV.

Morbidity

- **Influenza-like morbidity (Figures 1-3):** **In the community:** The decrease in the crude rate of visits to "Maccabi Healthcare Services" clinics due to influenza-like illness is continuing. This decrease is expressed in all age groups and in all Districts of Israel. A similar picture arises from data from "Clalit" Health Services.



חטיבת הבריאות
המרכז הלאומי לבקרת מחלות
ICDC – Israel Center for Disease Control

משרד
הבריאות
לחיים בריאים יותר

Fig. 1: Weekly visits to community clinics due to influenza-like illness, by year 2010-2013, compared to annual average

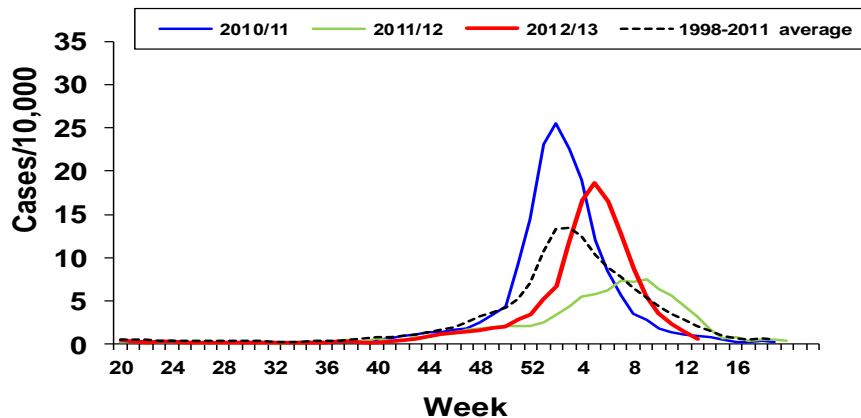


Fig. 2: Weekly visits to community clinics due to influenza-like illness, by age, 2011-2013

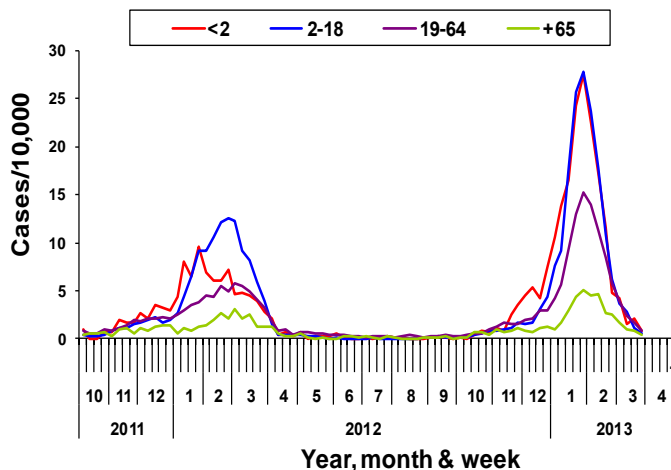
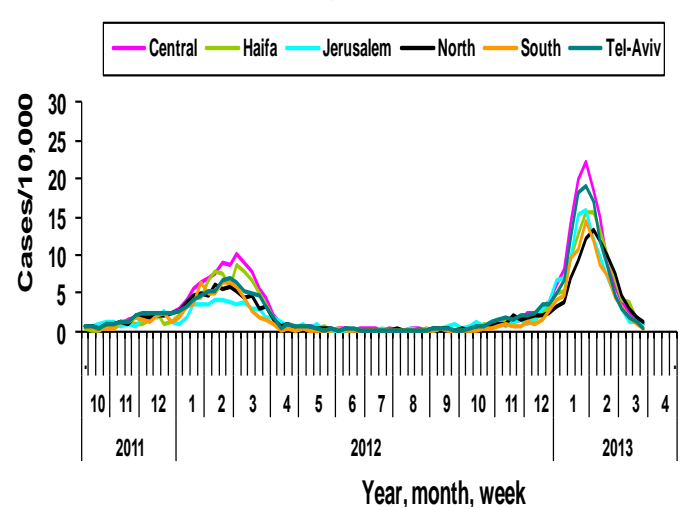


Fig. 3: Weekly visits to community clinics due to influenza-like illness, by district, 2011-2013



- **Pneumonia morbidity (Figures 4-5): In the community:** The decrease in the crude visit rate to "Maccabi Healthcare Services" clinics due to pneumonia is continuing. This decrease is expressed in all age groups. A similar picture arises from data from "Clalit" Health Services.



חטיבת הבריאות
המרכז הלאומי לבקרת מחלות
ICDC – Israel Center for Disease Control

משרד
הבריאות
לחיים בריאים יותר

Fig.4: Weekly visits to community clinics due to pneumonia, by year, 2010-2013, compared to annual average

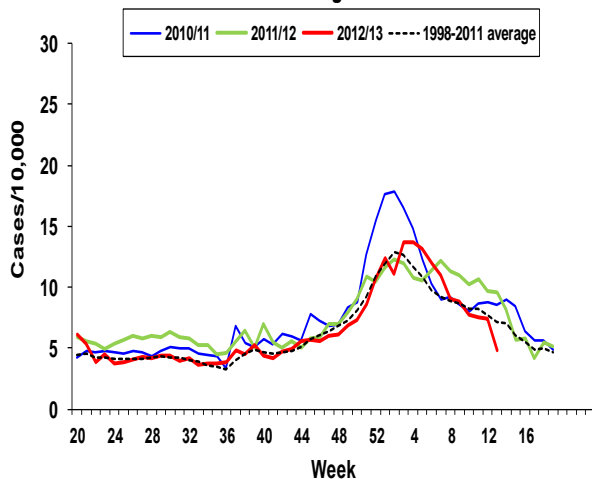
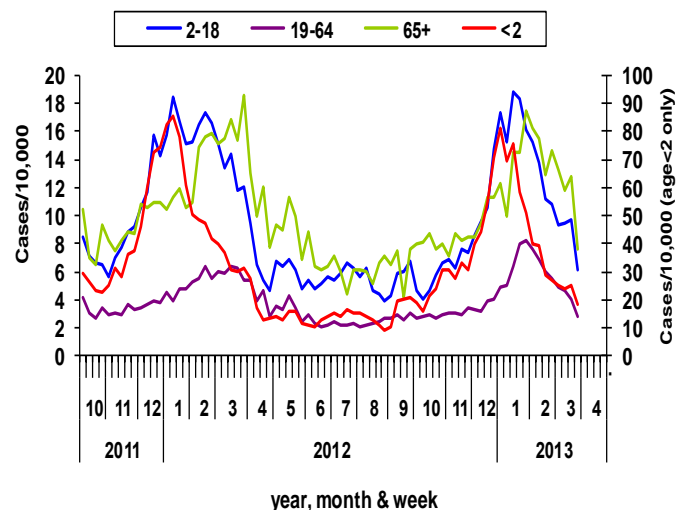


Fig. 5: Weekly visits to community clinics due to pneumonia, by age, 2011-2013



In hospitals: In recent weeks, no significant changes were observed in the percentages of visits to internal medicine and pediatric emergency rooms due to pneumonia. The percentage of visits to internal medicine emergency rooms is now similar to the multi-annual average. In contrast, the percentage of visits to pediatric emergency rooms is still below the multi-annual average.

Figure 6: Percentage of visits to adult ERs due to pneumonia out of total visits, Clalit hospitals, 2013-2010, compared to annual average

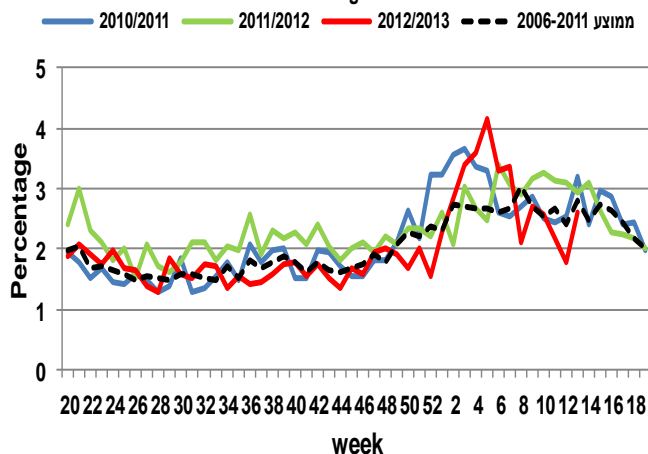
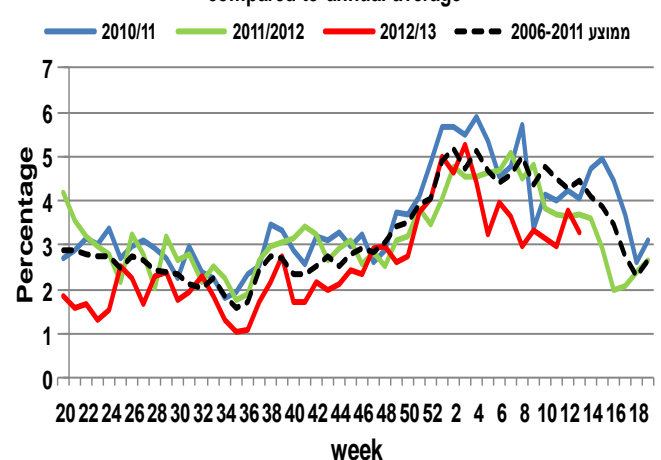


Fig 7: Percentage of visits to pediatric ERs due to pneumonia out of total visits, Clalit hospitals, 2013-2010, compared to annual average



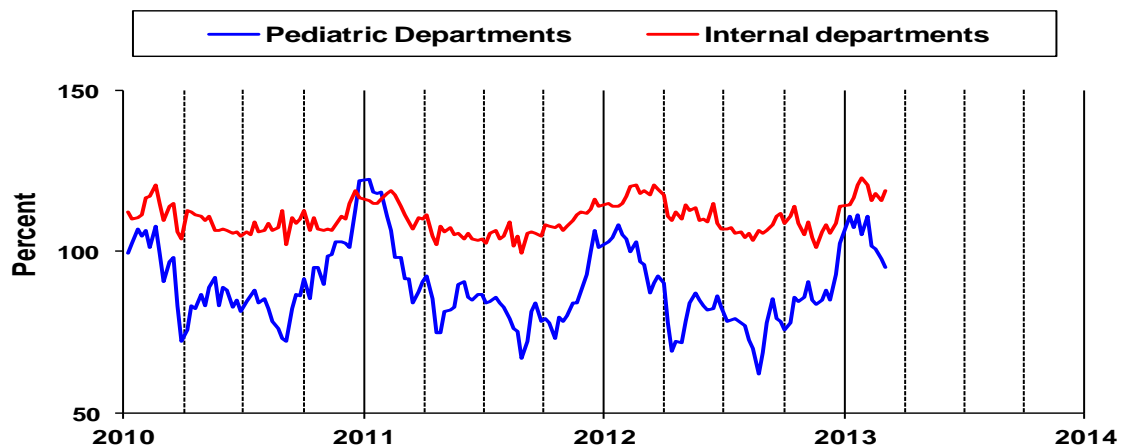


חטיבת הבריאות
המרכז הלאומי לבקרת מחלות
ICDC – Israel Center for Disease Control

משרד
הבריאות
לחיים בריאים יותר

- **Hospitalizations (Figure 8):** In the past week, decreases were observed in the average hospital bed occupancy rates in pediatric and internal medicine departments. The occupancy rate is within the seasonally expected range (the sharp decreases observed in the past week could be due to the Passover holiday that fell on this week).

Fig. 8: Weekly average bed occupancy, internal and pediatric departments, all hospitals, 2010-2013





חטיבת הבריאות
המרכז הלאומי לבקרת מחלות
ICDC – Israel Center for Disease Control

משרד
הבריאות
לחיים בריאים יותר

Mortality

- Figures 9-10:** Figure 9 is updated for Week 10 (ending 9-Mar-13), and shows the number of deaths throughout Israel, as compared to the multi-annual average. It arises from this figure that as of the beginning of March, the total number of deaths is continuing to decrease, now approximating the level of the multiple-annual average. It arises from Figure 10, based on data from the Epidemiology Division updated until Week 4 (ending 26-Feb-13), that the percentage of mortality that is due to pneumonia is around the seasonally expected level.

Fig. 9: Total deaths, all causes, 2010-2013, compared to annual average

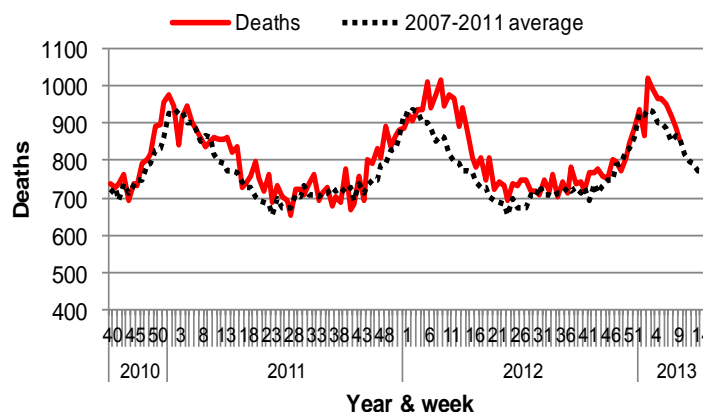
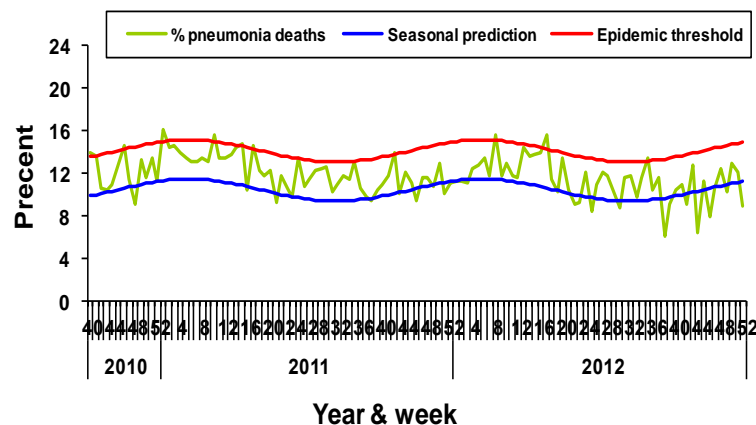


Fig. 10: Percentage of pneumonia-related deaths of all deaths, 2010-2012, compared to seasonal prediction





חטיבת הבריאות
המרכז הלאומי לבקרת מחלות
ICDC – Israel Center for Disease Control

משרד
הבריאות
לחיים בריאים יותר

Laboratory

Findings of the Sentinel Clinic Network (Figures 11-12): Results of tests by the Central Virology Laboratory for the current week are summarized in the following table:

	Week 12 [^] (17-Mar-13 – 23-Mar-13)	<u>Cumulative Data since</u> <u>Week 41</u> (ending 13-Oct-12)
No. of specimens	12	1,554
No. of RSV-positive specimens	2 (16.6%)	212 (13.6%)
No. of influenza-positive specimens	2 (16.6%)	511 (32.8%)
Type A influenza	0	477 (93.3%)
- A (H1N1)pdm 09	0	260 (54.5%)
- A/unsubtyped*	0	1 (0.2%)
- A/H3	0	216 (45.3%)
- A/H1	0	0
Type B influenza	2 (100%)	34 (6.7%)

[^]Note: During Week 13 (ending 30-Mar-13), specimens were not collected in the clinics due to the Passover holiday.

*Specimens that were found to be positive for type A influenza, but could not be subtyped due to small amount of virus.

All specimens found positive for influenza subtype A/H3 that have been tested thus far were antigenically identified as A/victoria/361/2011 (H3N2)-like, and those positive for A (H1N1) pdm09



חטיבת הבריאות
המרכז הלאומי לבקרת מחלות
ICDC – Israel Center for Disease Control

משרד
הבריאות
לחיים בריאים יותר

were identified as A/California/7/2009 (H1N1)-like, which resemble the strains included in this season's vaccine.

All specimens found positive for influenza B that have been tested thus far were antigenically identified as B/Wisconsin/1/2010, which belongs to the Yamagata lineage and resembles the strain included in this season's vaccine.

Fig 11: Positive influenza samples out of total samples collected by sentinel network, 2012/13

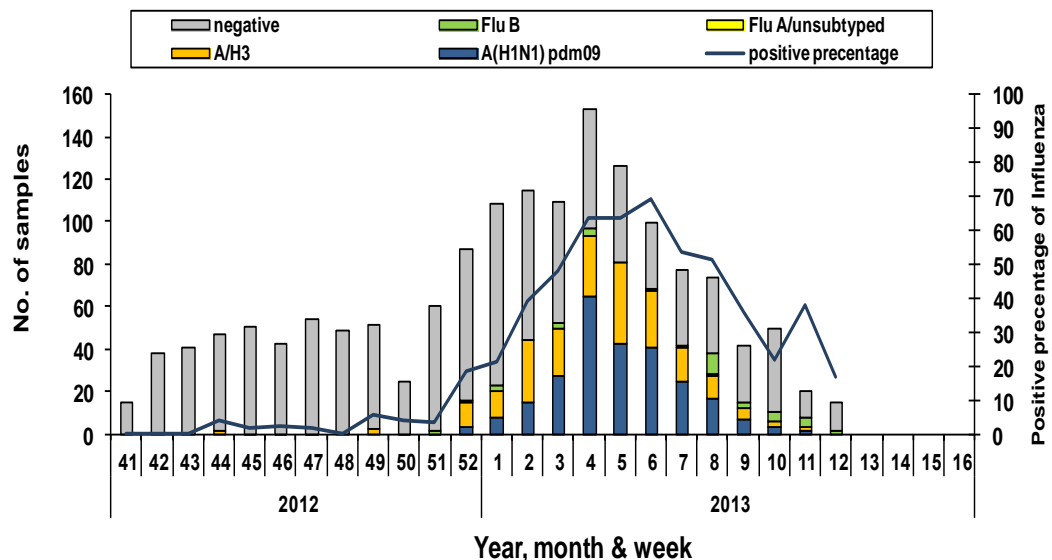
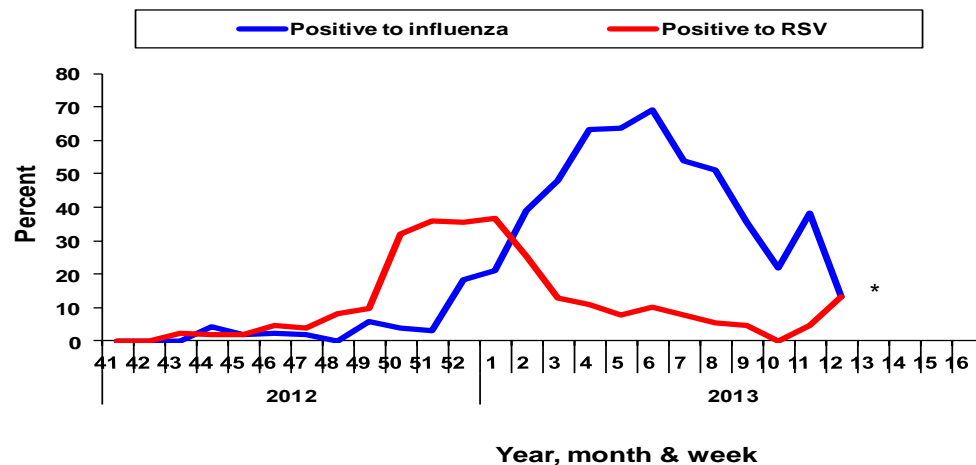


Fig. 12: Percentage of positive influenza and RSV samples out of total samples collected by sentinel network, 2012/13





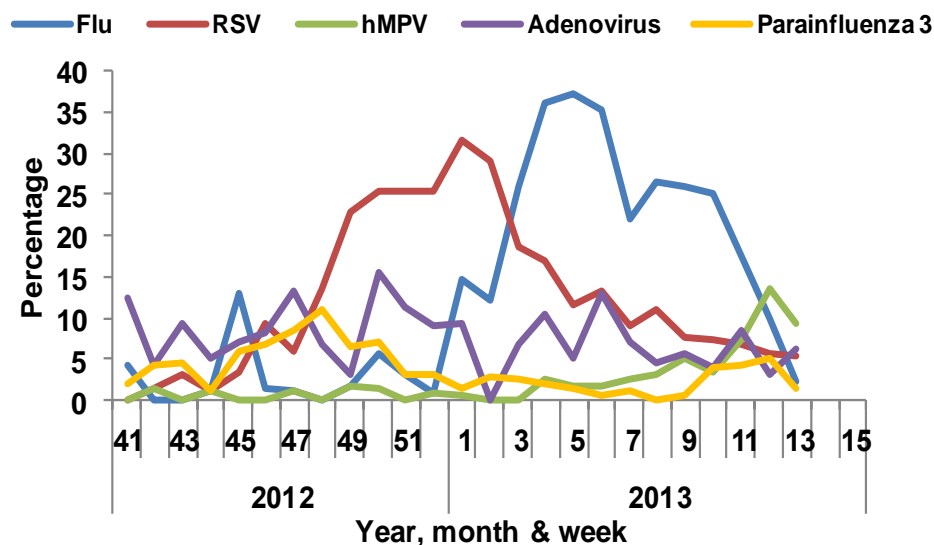
חטיבת הבריאות
המרכז הלאומי לבקרת מחלות
ICDC – Israel Center for Disease Control

משרד
הבריאות
לחיים בריאים יותר

*The reason for the relatively high percentage of specimens positive for RSV could be the small number of specimens collected in the past week.

Data from hospitalized patients diagnosed at the Central Virology Laboratory at the Sheba Medical Center, Tel Hashomer

Fig 13: Percentage of positive samples for respiratory viruses from patients hospitalized at the Sheba Medical Center, Tel Hashomer (The Central Virology Laboratory)





חטיבת הבריאות
המרכז הלאומי לבקרת מחלות
ICDC – Israel Center for Disease Control

משרד
הבריאות
לחיים בריאים יותר

International influenza activity

Europe: Updated for Week 12 (ending 24-Mar-13): In most European countries, decreases are being reported in rates of influenza-like illness or acute respiratory illness. Most countries are reporting low influenza activity, and there is combined activity of influenza A/H1N1 2009 and influenza B. During Week 12, an increase was observed in the percentage of specimens positive for influenza B.

USA: Updated for Week 12 (ending 23-Mar-13): Decreased influenza activity in the USA. The percentage of specimens positive for influenza is continuing to decrease. There is combined activity of influenza subtype A/H3N2, A/H1N1 2009 and influenza B, influenza subtype A/H3 being the dominant strain.